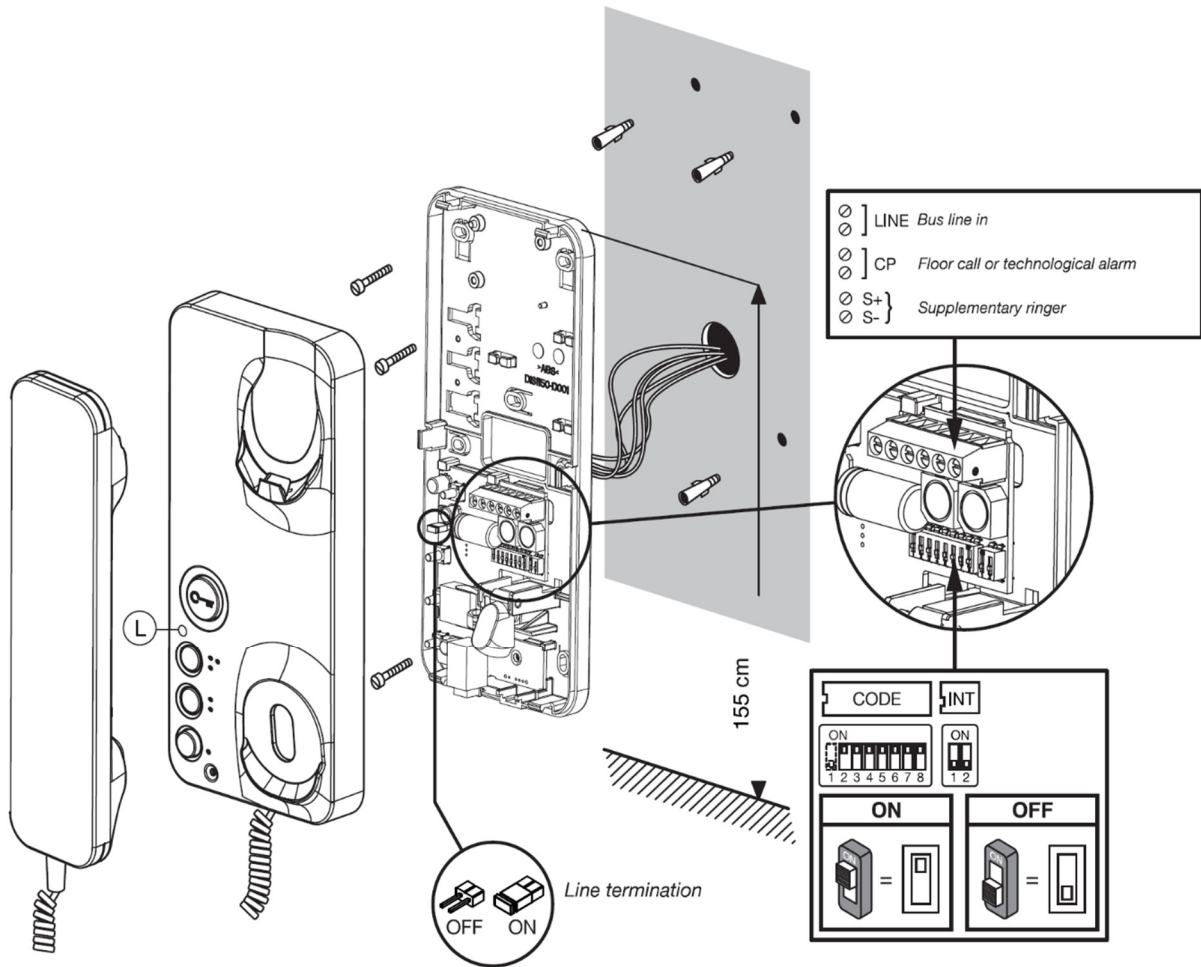


Mod. 1183/5

	ENGLISH
(L)	TWOCOLOUR LED INDICATION
Priority	Function
1	Rapidly blinking red: mute on
2	Green blinking: automatic door opener on
3	Red on steady: main calling station door open
4	Slowly blinking red: secondary calling station door open
5	Slowly blinking yellow: programming state on
NOTA NOTE NOTA NOTA HINWEIS	Refer to the system booklet for how to program intercom calls.

RESET

To restore default parameters of the device after entering programming mode, hold button ● pressed for longer than 5 seconds, hold buttons ● and hold ⌂ pressed for longer than 3 seconds. The system will emit two long beeps to confirm the command and exit the programming state.



BUTTON FUNCTIONS

STATE BUTTON	STANDING BY ON-HOOK	RINGING ON-HOOK (receiving call)	DURING AUDIO OPERATION	STANDING BY OFF-HOOK	PROGRAMMING STATE* (WITH DOOR PHONE STANDING BY ON-HOOK)
⌂	Open pedestrian door	Open pedestrian door	Open pedestrian door	Open pedestrian door	Connect / disconnect the automatic door opening system
●●	Special function (default: 7)	Special function (default: 7)	Special function (default: 7)	Programmable intercom call 3 (Default: not programmed)	Adjust door phone and floor call volume (volume changes according to the following sequence: LOUD, LOW, MUTE)
●	Special function (default: 8)	Special function (default: 8)	Special function (default: 8)	Programmable intercom call 2 (Default: not programmed)	Floor call ring tone (5 different ring tones)
●	Garage door opener	Garage door opener	Garage door opener	Programmable intercom call 1 (Default: switchboard call)	Door phone call ring tone (5 different ring tones)

(*) To enter and exit programming state, hold button ● pressed for longer than 5 seconds. The yellow LED will blink slowly to indicate that programming mode is selected. In any case, after 10 minutes the system exits the programming state and saves the modified parameters.

